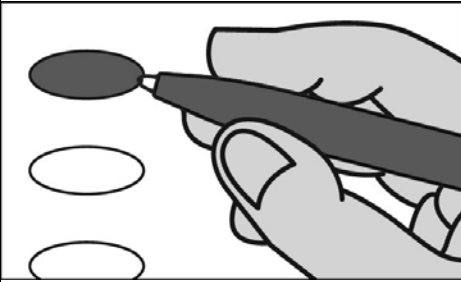


Official Primary Ballot
Nonpartisan Office
February 21, 2017

S1

Notice to voters: If you are voting on Election Day, your ballot must be initialed by two election inspectors. If you are voting absentee, your ballot must be initialed by the municipal clerk or deputy clerk. Your ballot may not be counted without initials. (See end of ballot for initials.)

General Instructions



If you make a mistake on your ballot or have a question, ask an election inspector for help. (Absentee voters: Contact your municipal clerk.)

To vote for a name on the ballot, fill in the oval next to the name like this: ●

To vote for a name that is not on the ballot, write the name on the line marked "write-in," and fill in the oval next to the name like this: ●

**State Superintendent of
Public Instruction**

**State Superintendent
Vote for 1**

- Tony Evers
- Lowell E. Holtz
- John Humphries
- write-in:

SAMPLE