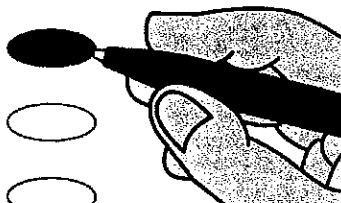


# SAMPLE

**Official Ballot  
Referendum  
November 7, 2017**

Notice to voters: If you are voting on Election Day, your ballot must be initialed by two election inspectors. If you are voting absentee, your ballot must be initialed by the municipal clerk or deputy clerk. Your ballot may not be counted without initials. (See right column of ballot for initials.)

**Instructions**



If you make a mistake on your ballot or have a question, ask an election inspector for help. (Absentee voters: Contact your municipal clerk.)

**Referendum**

To vote in favor of the question, fill in the oval next to 'Yes', like this: ●

To vote against the question, fill in the oval next to 'No', like this: ●

**School District of Milton**

Shall the School District of Milton, Rock and Jefferson Counties, Wisconsin be authorized to issue pursuant to Chapter 67 of the Wisconsin Statutes, general obligation bonds in an amount not to exceed \$69,900,000 for the public purpose of paying the cost of a District-wide school building and improvement program consisting of construction of an addition at East Elementary School; conversion of the current high school to the middle school; construction of a new high school and related site improvements on land adjacent to the current high school owned by the District; renovations and improvements to provide for reconfiguration of grade levels; and acquisition of furnishings, fixtures and equipment?

- Yes
- No

**Official Ballot  
Referendum**

**November 7, 2017  
for**

- T. Fulton
- T. Harmony
- T. Janesville
- T. Johnstown
- T. Lima
- C. Janesville W19
- C. Milton
- T. Koshkonong

**Ballot issued by**

\_\_\_\_\_

Initials of election inspectors

**Absentee ballot issued by**

\_\_\_\_\_

Initials of municipal clerk or deputy clerk  
(If issued by SVDs, both SVDs must initial.)

**Certification of Voter Assistance**

I certify that I marked or read this ballot aloud at the request and direction of a voter who is authorized under Wis. Stat. sec. 6.82 to receive assistance.

Signature of assistor

**For Official Use Only**

**Inspectors:** Identify ballots required to be remade.

**Reason for remaking ballot:**

- Overvoted
- Damaged
- Other

Orig. Ballot No. or Dup. Ballot No.

\_\_\_\_\_

Initials of inspectors who remade ballot