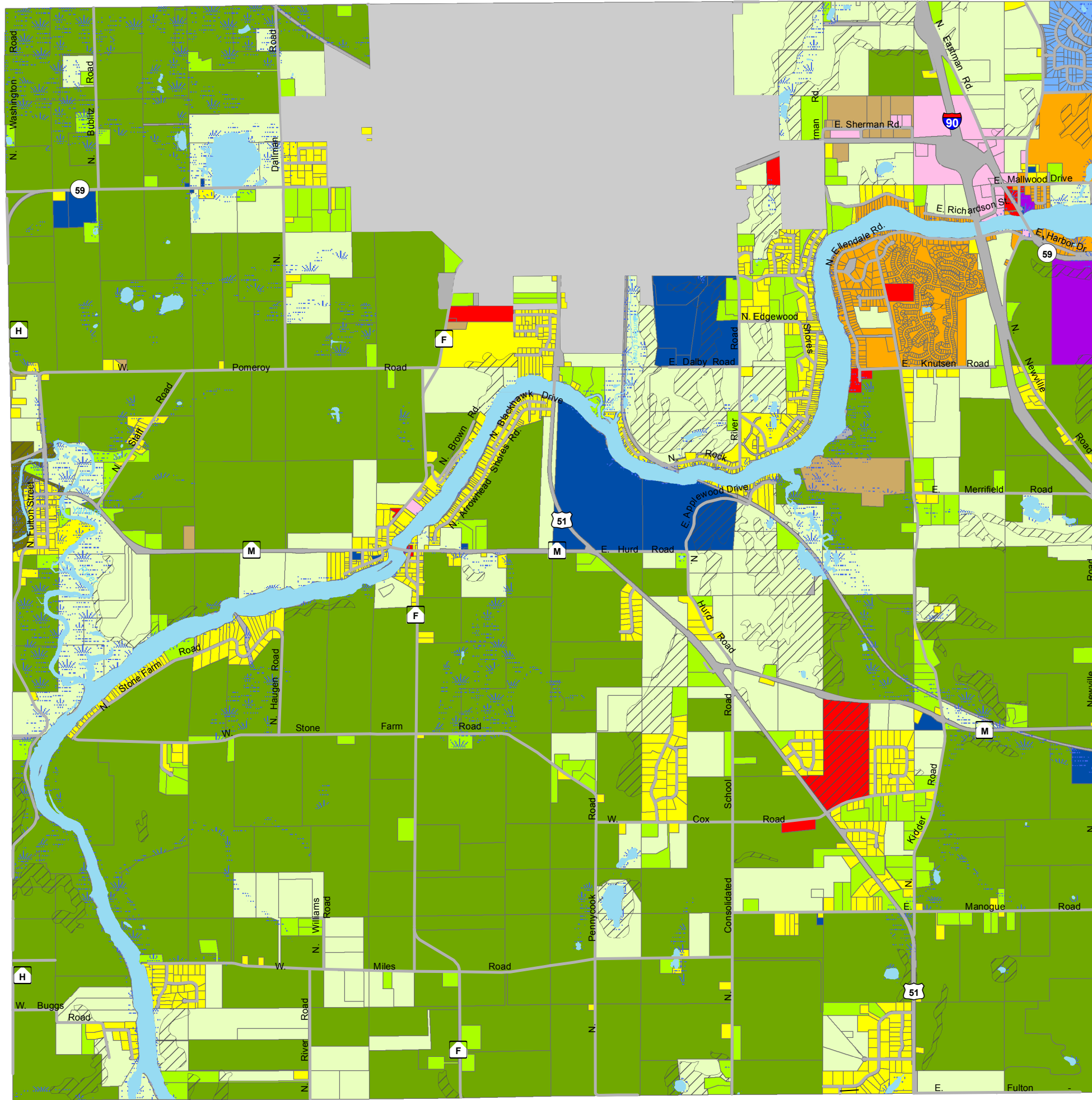


Town of Fulton

Zoning

DRAFT: 7-14-2015



Legend

- Town Boundary
- City of Edgerton
- Roads
- Open Water
- Town Zoning - Underlying Districts**
 - Agricultural-Exclusive (A-E)
 - Agricultural-General (A-G)
 - Residential-Rural Density Large (R-RL)
 - Residential-Rural Density Small (R-RS)
 - Residential-Low Density (R-L)
 - Planned Development (P-D)
 - Commercial-Local (C-L)
 - Commercial-Highway Interchange (C-H)
 - Commercial-Recreational (C-R)
 - Industrial-Light (I-L)
 - Special Use (SU)
 - Natural Resource-Open Space (NR-OS)
 - Dedicated Right of Way
- Town Zoning - Overlay Districts**
 - Environmental Conservation - Lowland (EC-L)
 - Environmental Conservation - Highland (EC-H)



DATA SOURCE: ROCK COUNTY PLANNING, ECONOMIC & COMMUNITY DEVELOPMENT AGENCY